

## RS Series Cast Iron Boiler

### Assembly Manual



**Cast Iron Body Assembly Details**  
**Boiler Jacket Assembly Details**

## **RS SERIES CAST IRON BOILERS INSTALLATION SPECIFICATIONS :**

This installation manual is prepared for licensed and certified installation and service technicians in domestic and international markets and for perfect cast iron boiler installation.

It is obvious that technicians must provide safety and security conditions before and during installation process. Technicians must pay attention while they are carrying heavy cast iron boiler sections before and during assembly and installation process for preventing health injuries.

Boiler room and boiler platform must be controlled before starting to installation process. If the conditions are inconvenient do not start the installation process until all conditions are convenient.

Please read, study and understand this manual before starting the installation process.

Installation components and equipments are provided with the boilers. Assembly silicone, silicone cartridge, brush, nipple paint, blakite, gloves and dust mask is provided with assembling equipments.

Do not damage boiler body and cabins painting during and after installation process and during burner and system - chimney connection process and warn other technicians for this matter.

Please ask for help from producer or sales company technical departments if any questions occur in your mind during installation process.

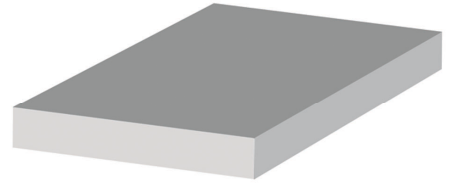
Minimum 2 persons are required for RS series cast iron boilers installation.

Do not forget that correctly installed boiler will work properly for long time.

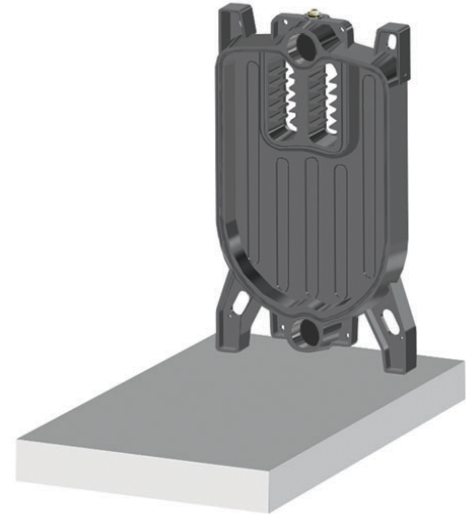
We thank you for reading these warnings and suggestions and wish you a succesful installation.

**RIMA HEATING SYSTEMS**

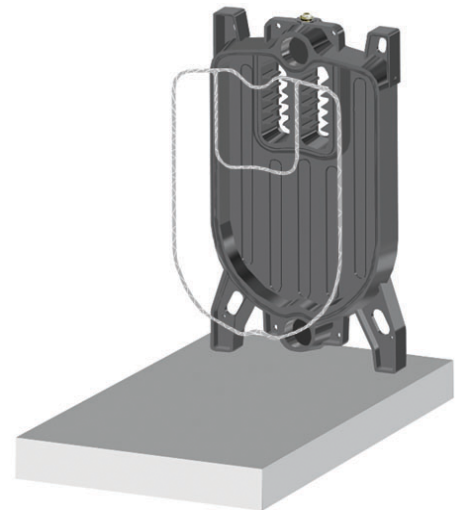
Boiler platform must be prepared according to the information in technical boiler manual .



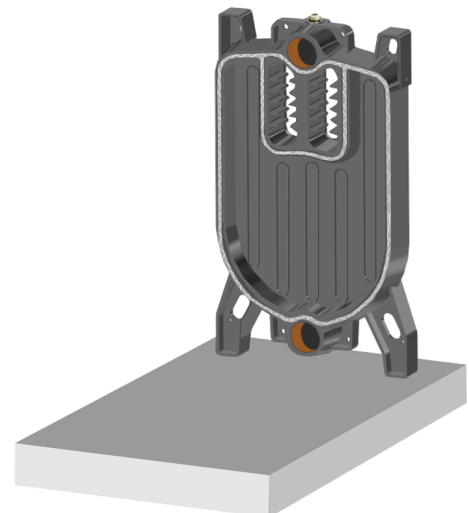
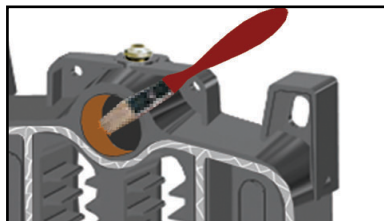
Back section must be installed on boiler platform.



Back section smoke leakage proof channels must be cleared with a brush or with a piece of cloth and silicon must be filled in it afterwards.  
Prepared smoke leakproof isolation rope must be stuck in that channel like in the picture with the help of silicon which is already filled.

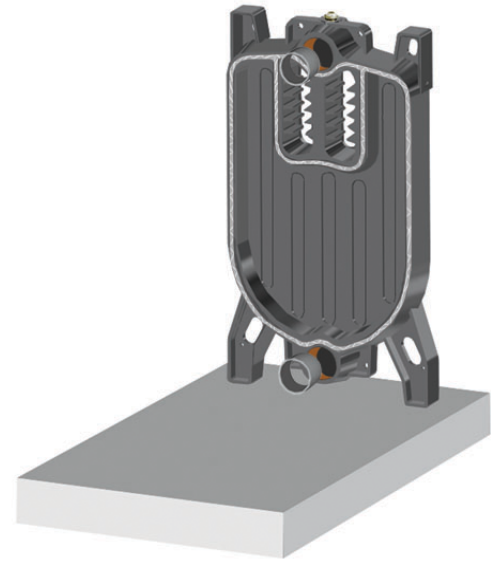


Back section nipple holes must be cleaned and painted with the orange paint for preventing leakage.



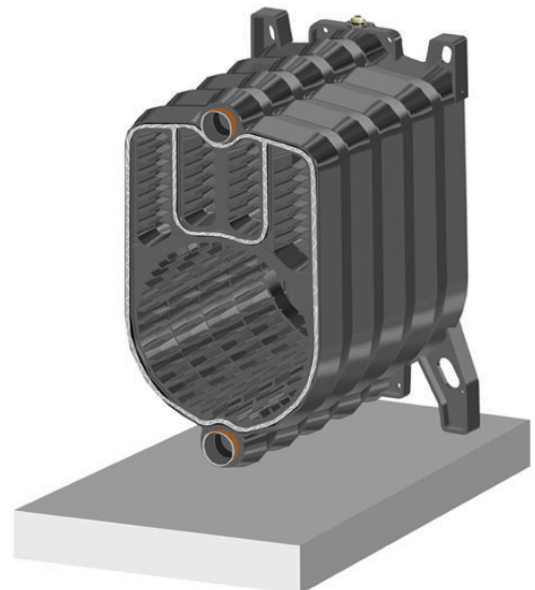
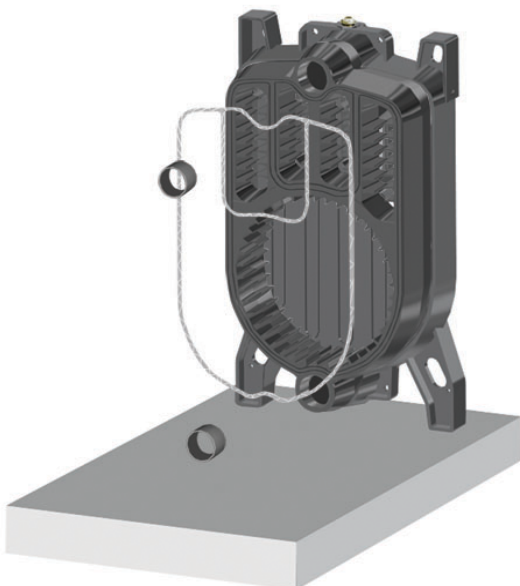
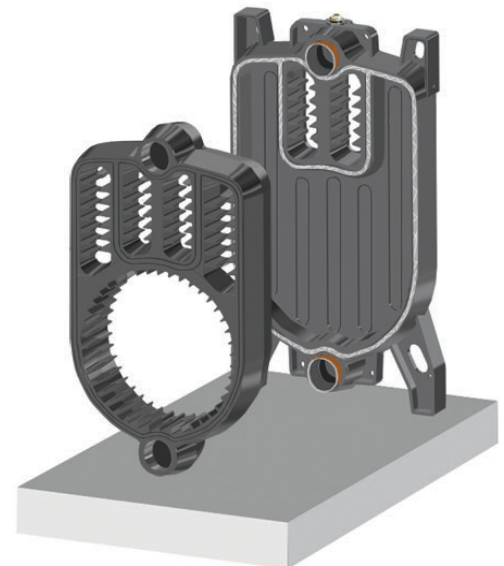
Afterwards outer surfaces of the nipples must be cleaned and installed.

Outer surfaces of nipples must be painted with orange paint with brush.



Afterwards boiler middle section nipple holes must be cleaned, and installed according to the positions of back sections nipples.

According to the boiler type ( section quantity ) same process must be applied for all middle sections and middle section assembly finishes.



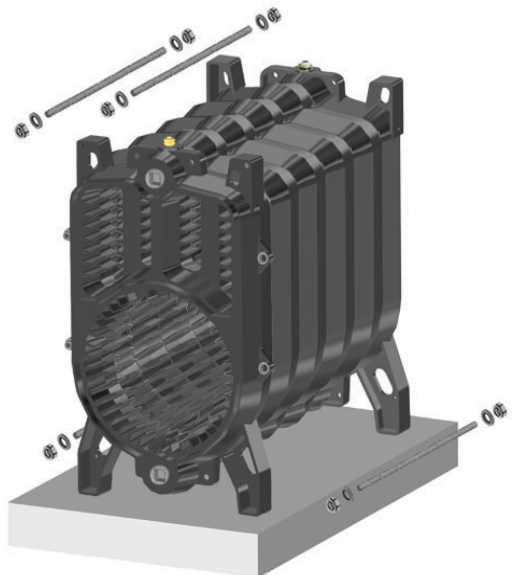
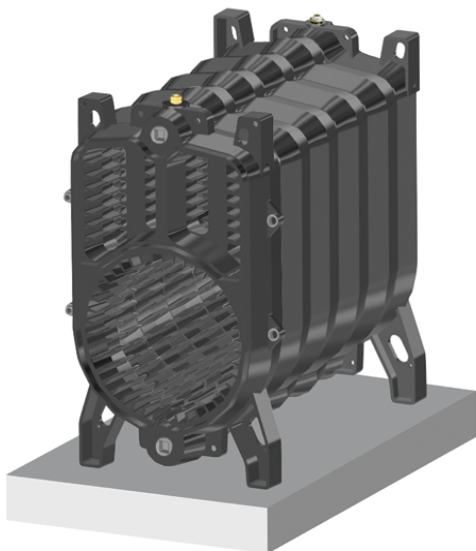
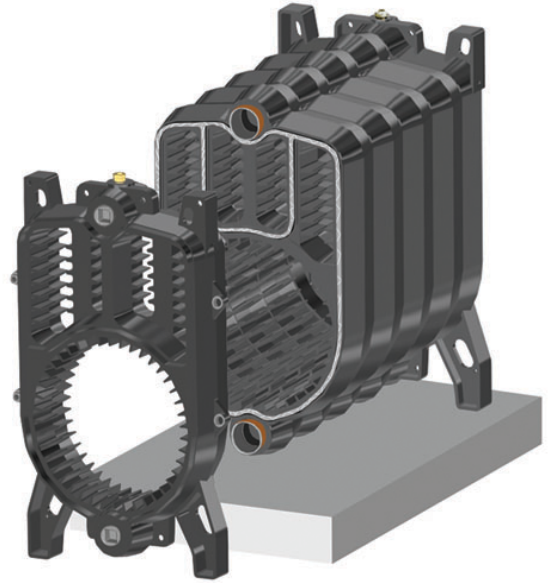


In RS-06, RS-07, RS-08 and RS-09 series; arrows and marks which are showing the assembling direction are painted with white paint on the sections.

Written in numbers, 1, 2 and if there is numbered 3 sections assembly are made as arrows show the same direction.

Number 1 section is the back section. And number 2 section is the middle section in front of the back section.

Other middle section assemblies must be made in same way. And after finishing middle section assembly front section must be assembled in the same way.



After completing assembly of the sections, M10 boiler stabilization rods must be connected to holes.

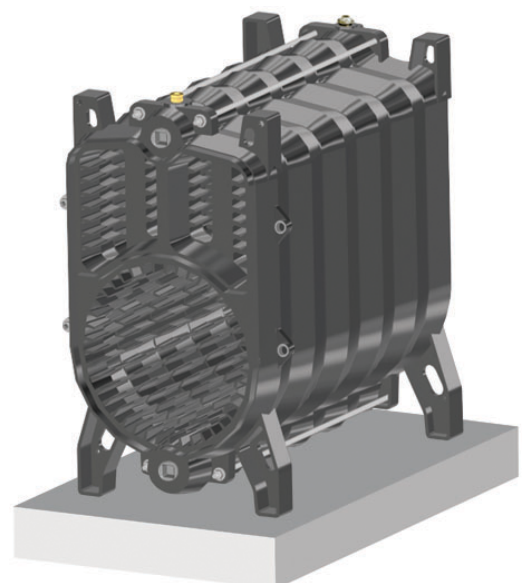
Stabilization rods must be screwed in cross order. Rods must be screwed until the emptiness between isolation ropes and the sections.

For torque control : 5 kgm

Boiler must be filled with water and hydraulically test must be done with under 9 bars pressure.

Blakite must be filled between the sections for filling up the empty spaces.

Section connection areas must be controlled for smoke leakage. This control can be made with a mobile light or floodlight projector. Boiler inside must be lighted with the light and boiler must be checked from outside and blakite must be applied if there are points that reflect the light to outside.

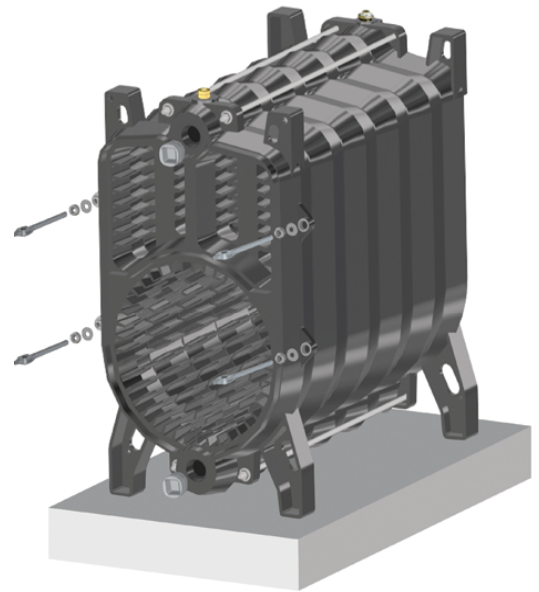


In RS series chimney water input and output connection pipes are sent as installed to the back section.

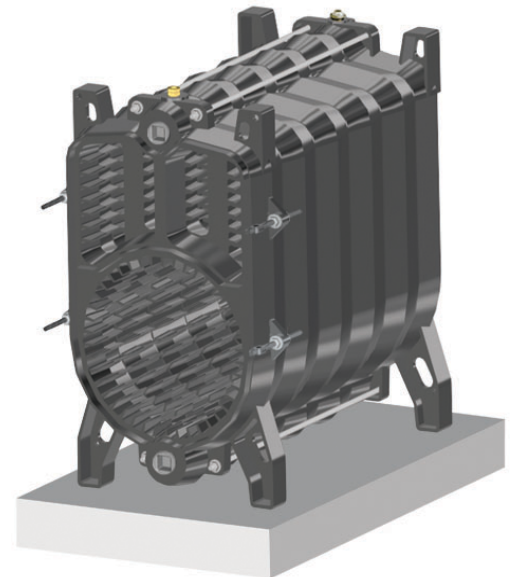
Chimey dimensions :

Boiler Type	RS - 05	RS - 06	RS - 07	RS - 08	RS - 09
Chimney Dim.	150	150	180	180	180

Two hinges are connected to the hinge sockets on to front sections according to the desired burner door opening side.



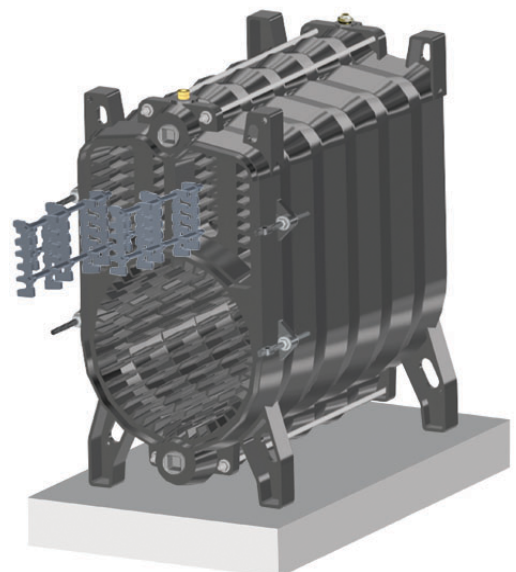
These hinges and rods are stabilized by screwing with nuts and washer.



2 pieces of flame delayer turbulators must be installed to the 3rd passage of the boiler before burner door installation.

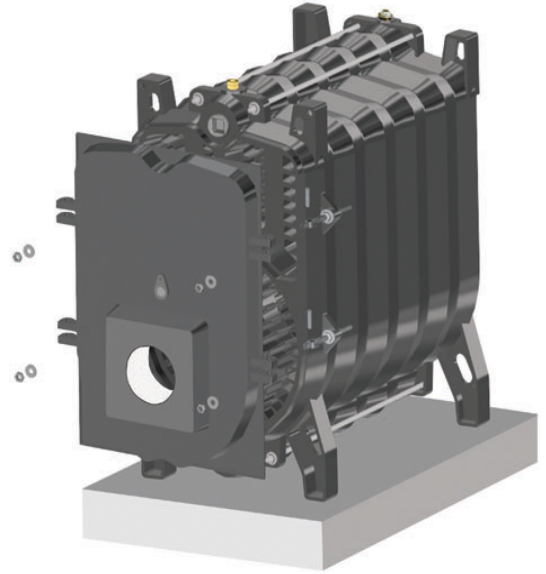
There are protection nails for preventing the turbulators to get inside .

2 pieces of turbulators are used per each boiler in all RS series boilers.

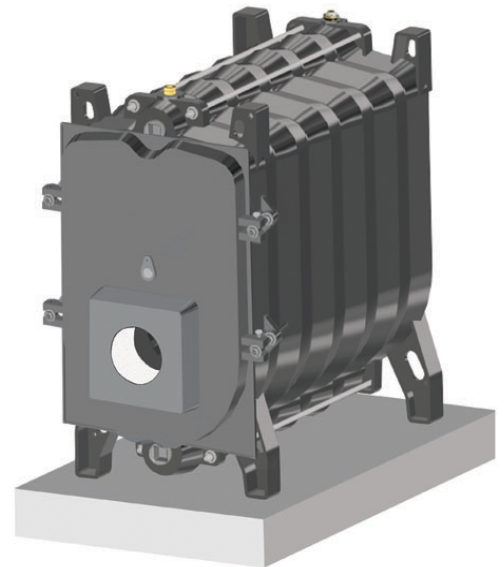


Connecting rods and hinges with nuts and washers, burner door is installed in order until isolation rope presses on the feeders of front section.

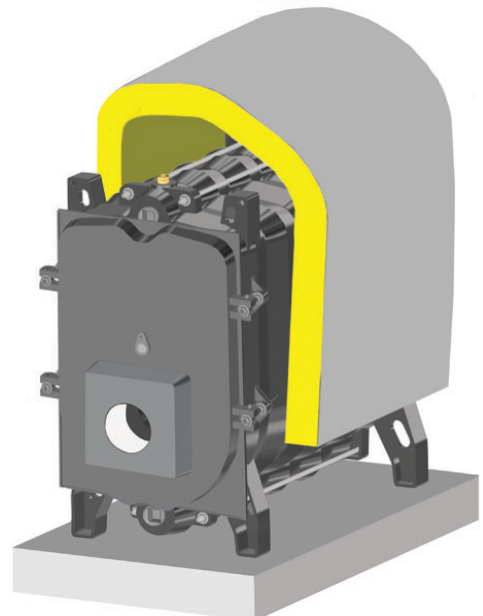
Depending on the opening side of door ; 2 pieces of M8 x 60 bolts must be connected into the empty area on hinges and screwed with nuts from the bottom.



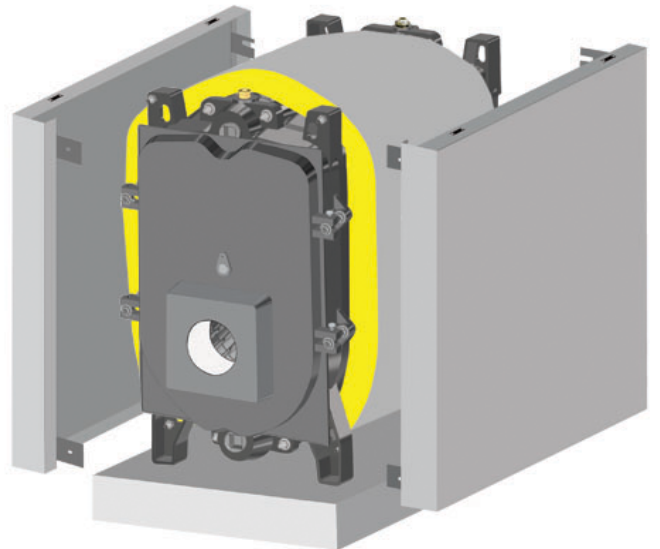
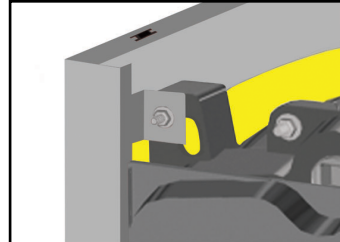
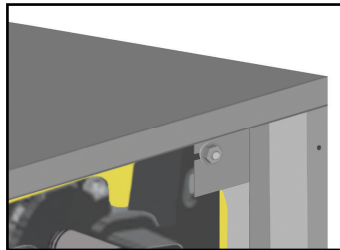
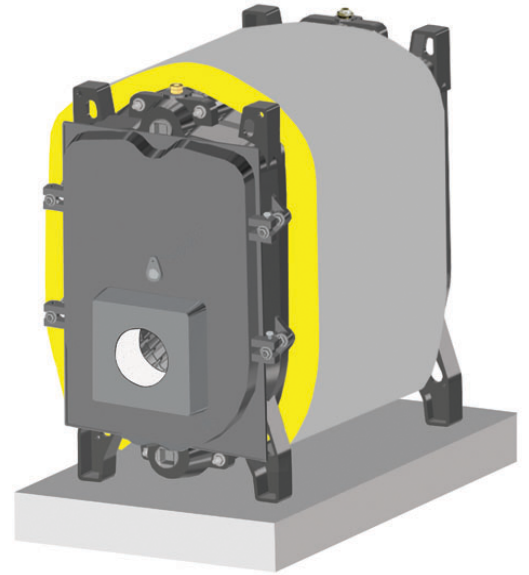
After installation of burner door, boiler body assembly finishes.



Boiler body insulation must be put on to the boiler body.

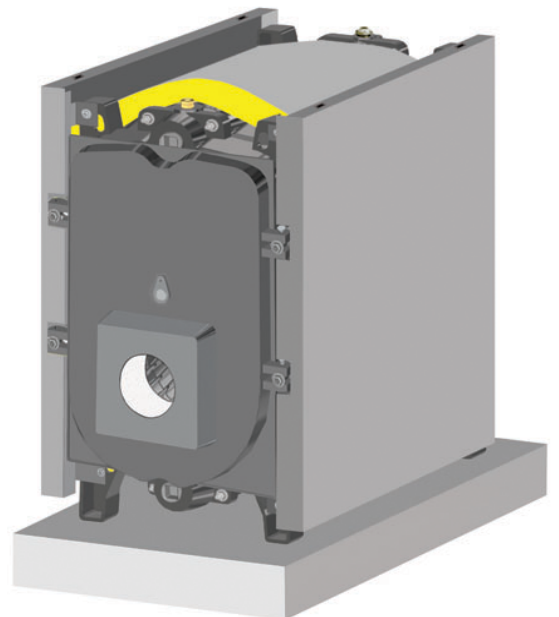


After body insulation installation, cabin sheets assembly starts.



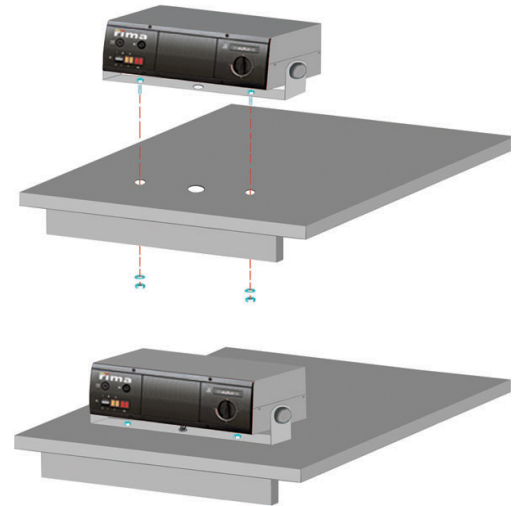
8 pieces of M8 x 40 bolts, must be installed to cabin sheet assembly holes which are on the front and back sections.

Bolts direction are from center to outside of the boiler. Heads of the bolts must show inside. 1. bolt pin must be screwed for stabilizing the bolt to the ear. 2. bolt pin must be moved on bolt until it is in the same line with the end of the ear. As shown in figure side cabin sheets must be connected to front section bolts and afterwards to back section bolts. Then it must be connected to the body with the help of bolt pin. Same process must be applied for the other side cabin sheet too.

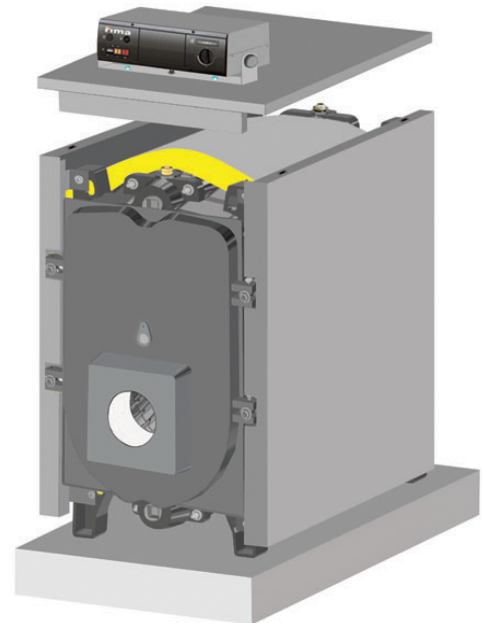




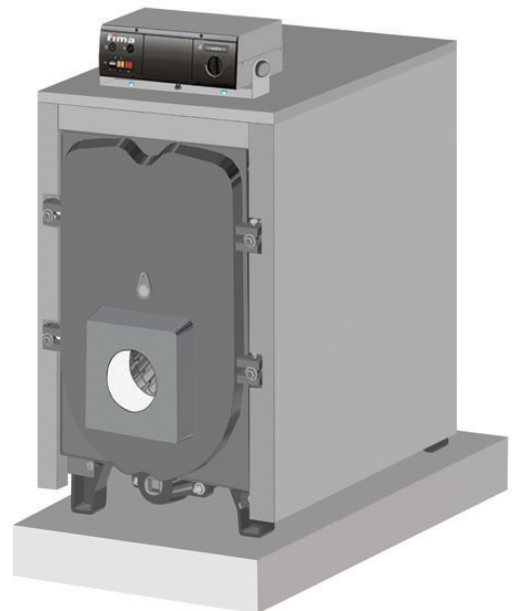
After the installation of the left and right side cabin sheets, boiler control panel must be connected to panels feet with 2 pcs M6 x 15 bolt as shown in figure and must be passed through the holes in uppercabin sheet. Then it must be stabilized by screwing it with nuts and screws from bottom.



Control panel sensors must be passed through the holes on the top cabin sheet and thermostat socket must be filled with oil. Than sensors edges must be installed inside the socket . Segment must be plugged for preventing the sensor edges to move out.

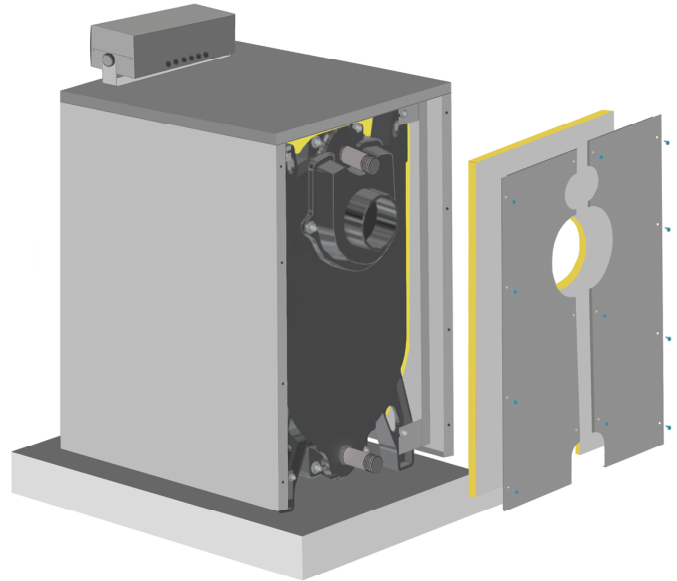


There are 4 pieces of tap bolts on the top cabin sheet. They must be stabilized by connecting them to the sockets in side cabin sheets.



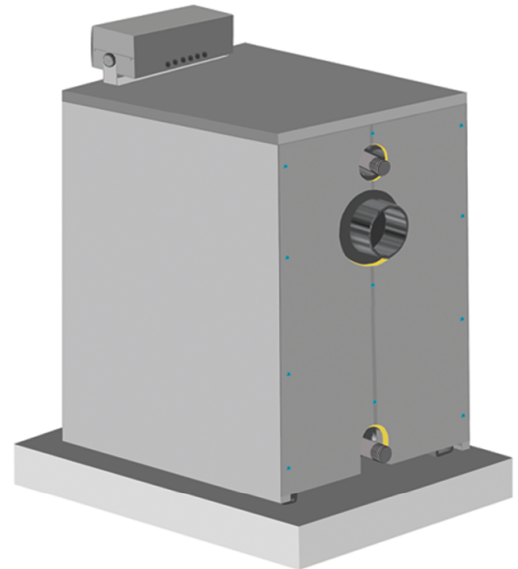
After side and top cabin sheet assembly, back cabin sheet must be installed.

First backside isolation must be installed to the back side of the boiler. Two piece cabin must be connected with screws to the side cabin sheets.



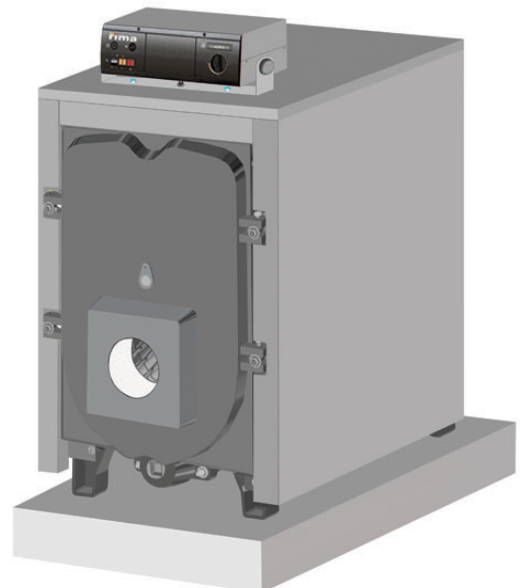
With back cabin sheet installation completes, all cabin parts installation is finishes.

With all the boiler body , control panel and cabin sheets assembly assembling process is completed.



Then the boiler is ready for burner installation, system and chimney connections.

**\*\*\* Burner installation, chimney and system connections must be done according to the standards and in attention with specifications in operation and maintenance manuals and by authorized technicians.**



**Önmetal** 

**Önmetal Döküm Sanayi ve Ticaret Ltd. Şti.**  
İkitelli Organize Sanayi Bölgesi Atatürk Bulvarı  
17. Cadde No:5 34306 Başakşehir / İSTANBUL

**T: +90 212 485 4874** | pbx

**F: +90 212 485 4873**

[www.rima.com.tr](http://www.rima.com.tr)  
[www.onmetal.com.tr](http://www.onmetal.com.tr)